

# ANNEXURE-C.1

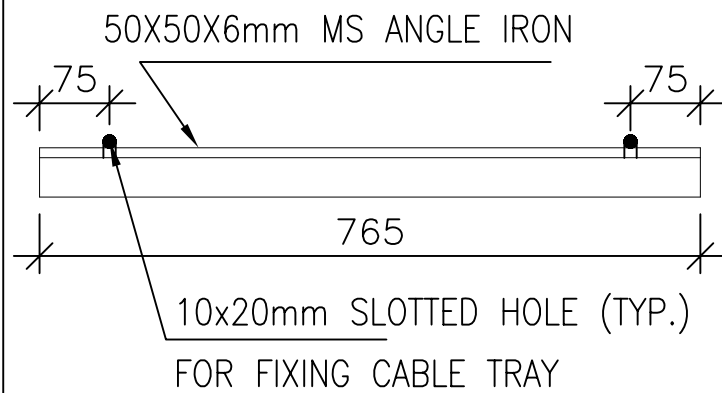


FIGURE-1

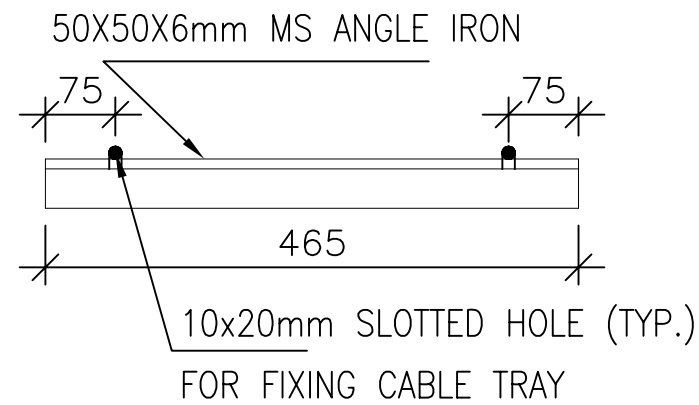


FIGURE-4

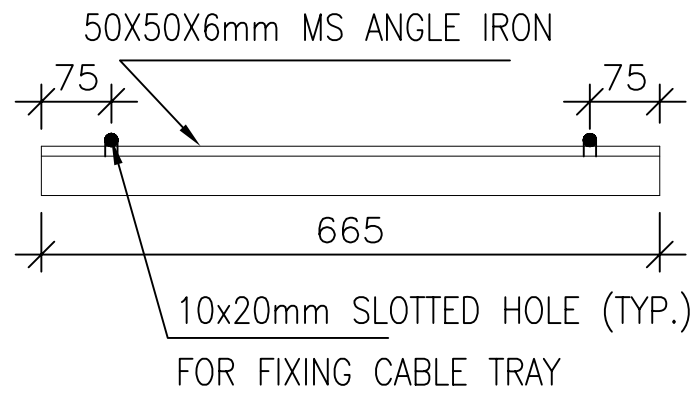


FIGURE-2

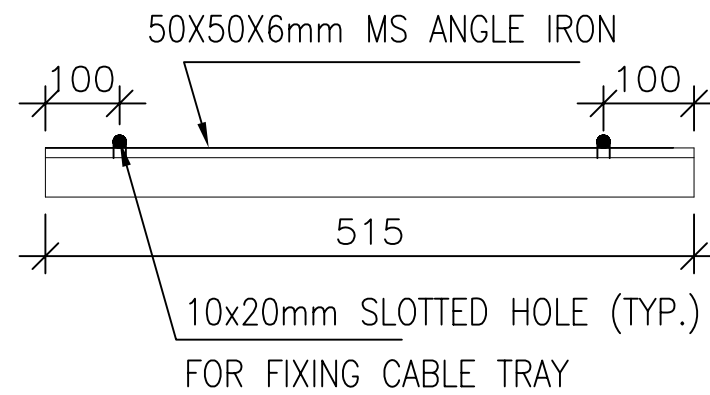


FIGURE-5

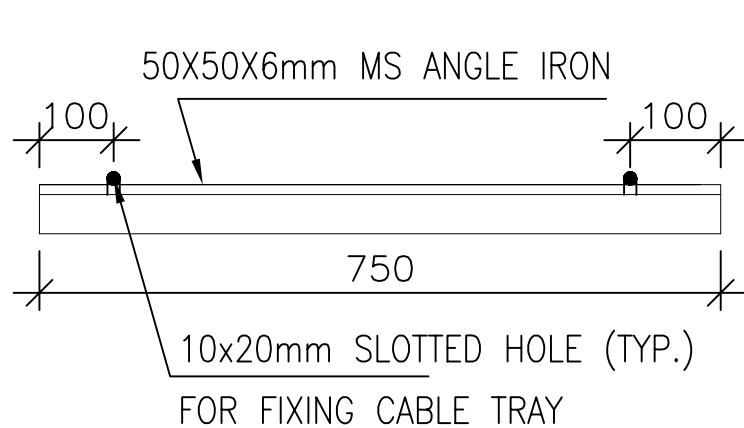


FIGURE-3

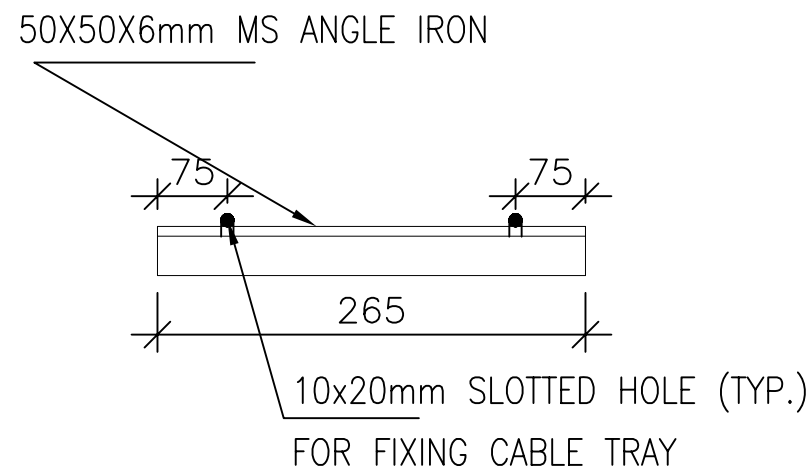


FIGURE-6

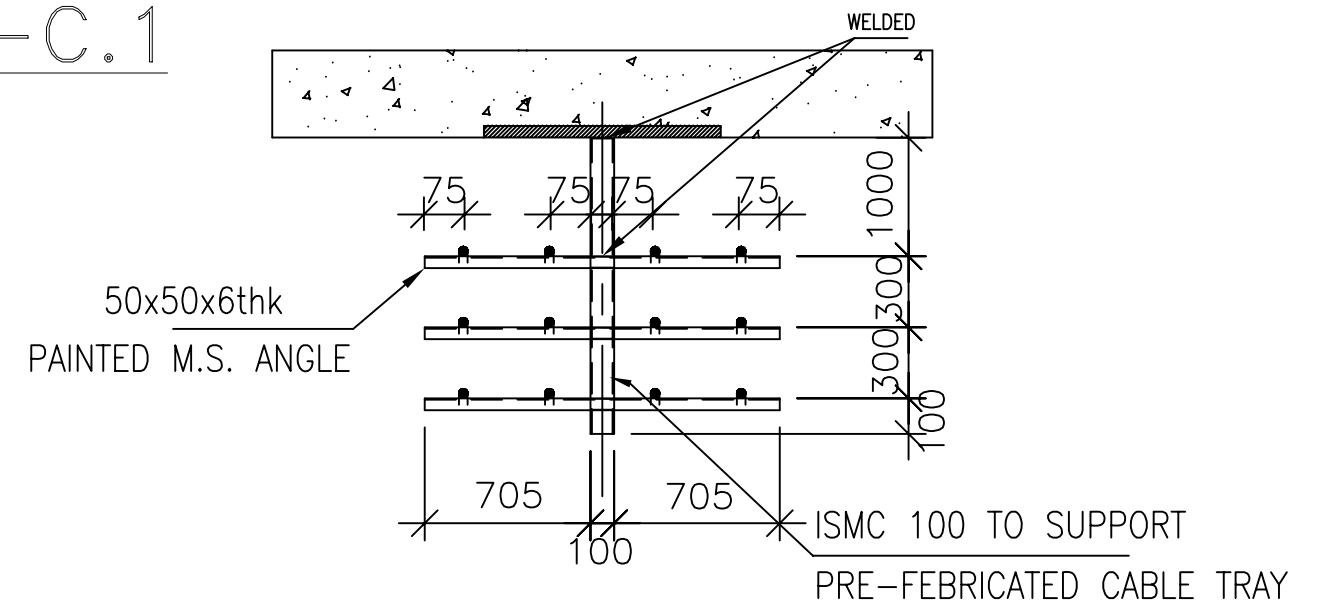


FIGURE-7

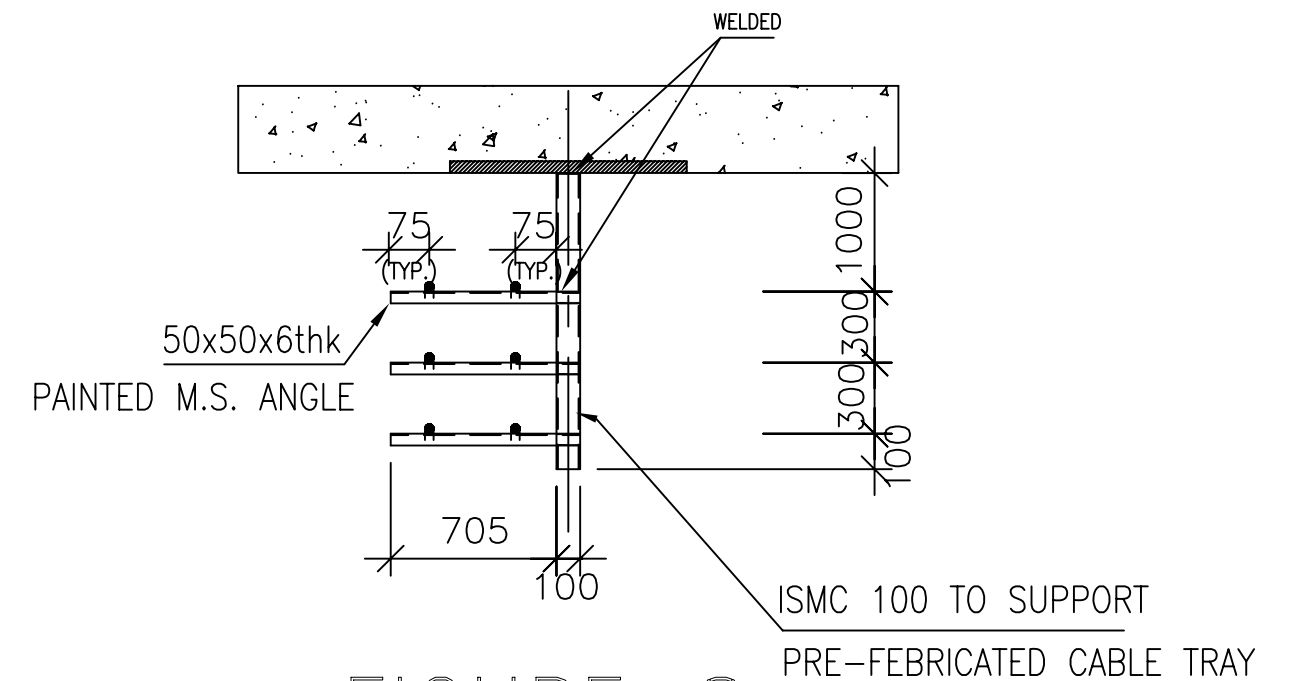
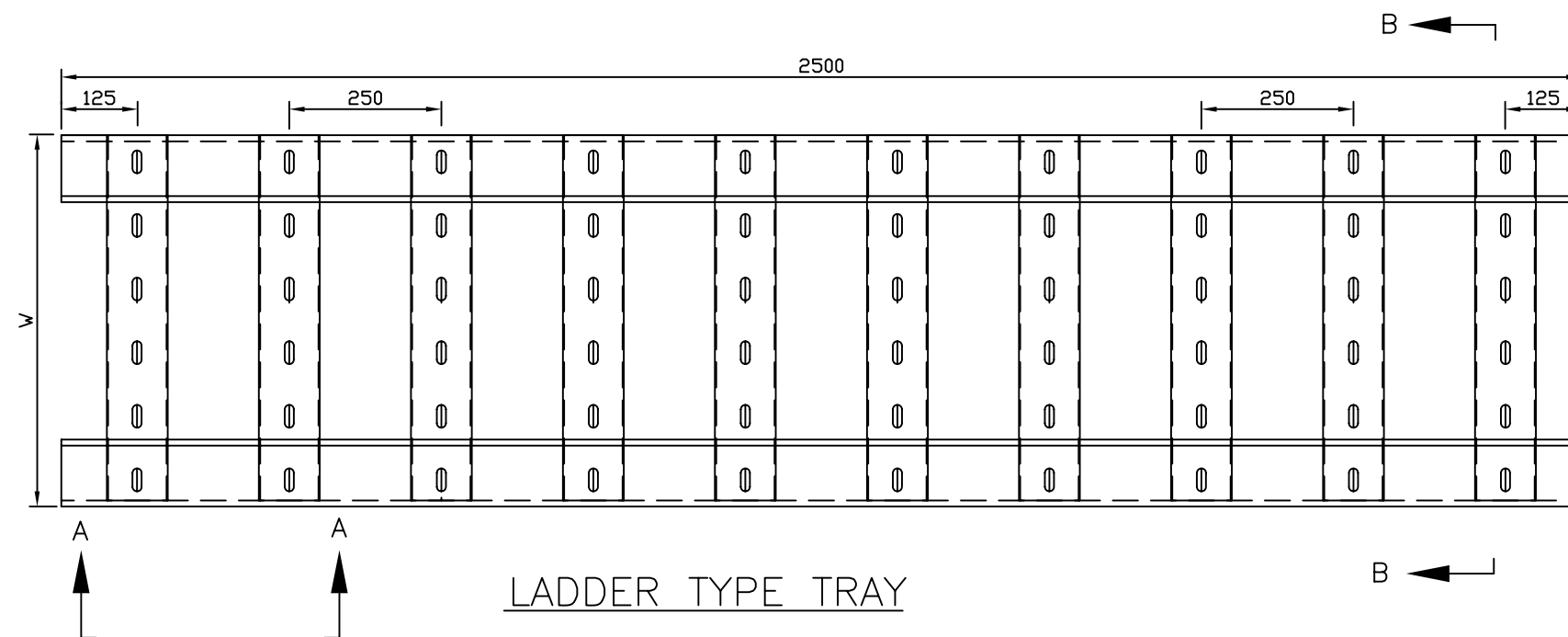


FIGURE-8

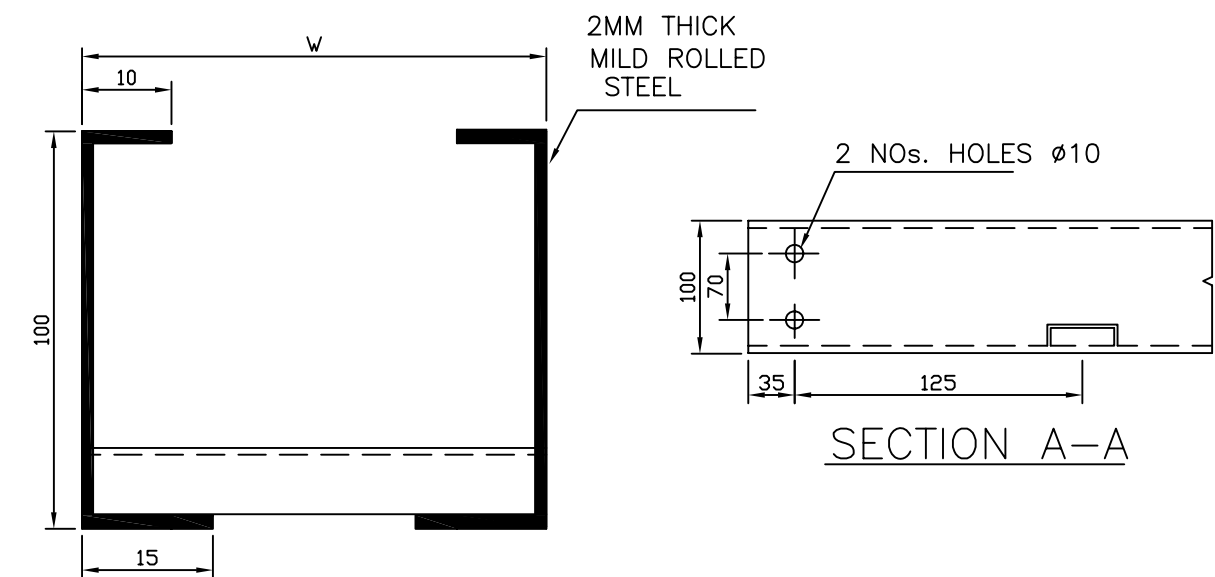
## NOTES:-

1. ALL DIMENSIONS ARE IN mm.

# ANNEXURE – C.2

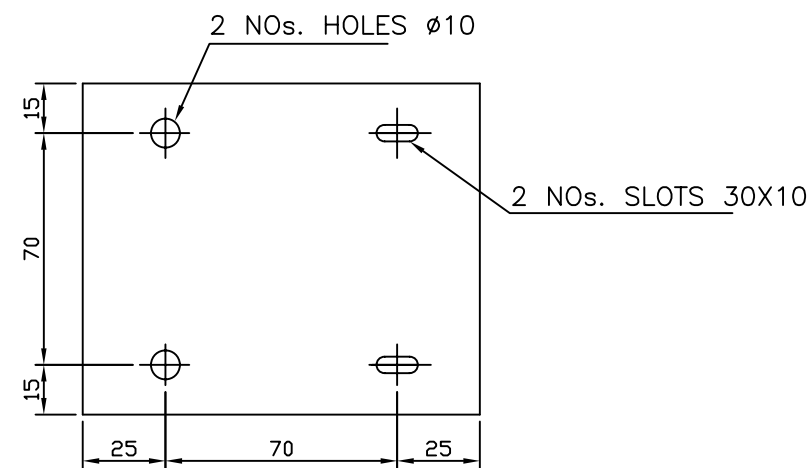


LADDER TYPE TRAY

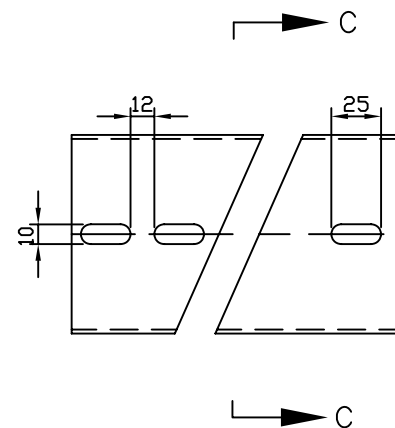


SECTION B-B

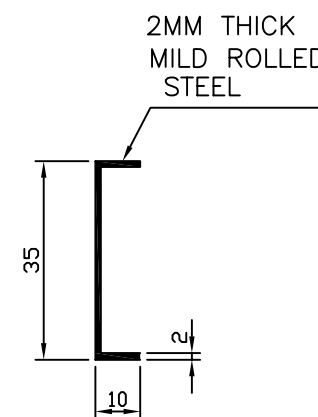
SECTION A-A



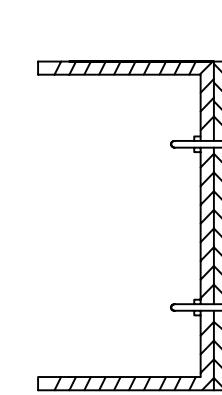
COUPLER PLATE  
(3MM THICK)



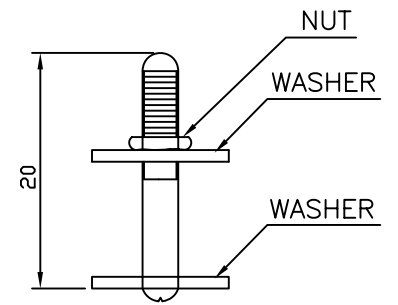
SLOTTED RUNG



SECTION C-C



TYPICAL JOINT OF TRAYS  
WITH COUPLER PLATE



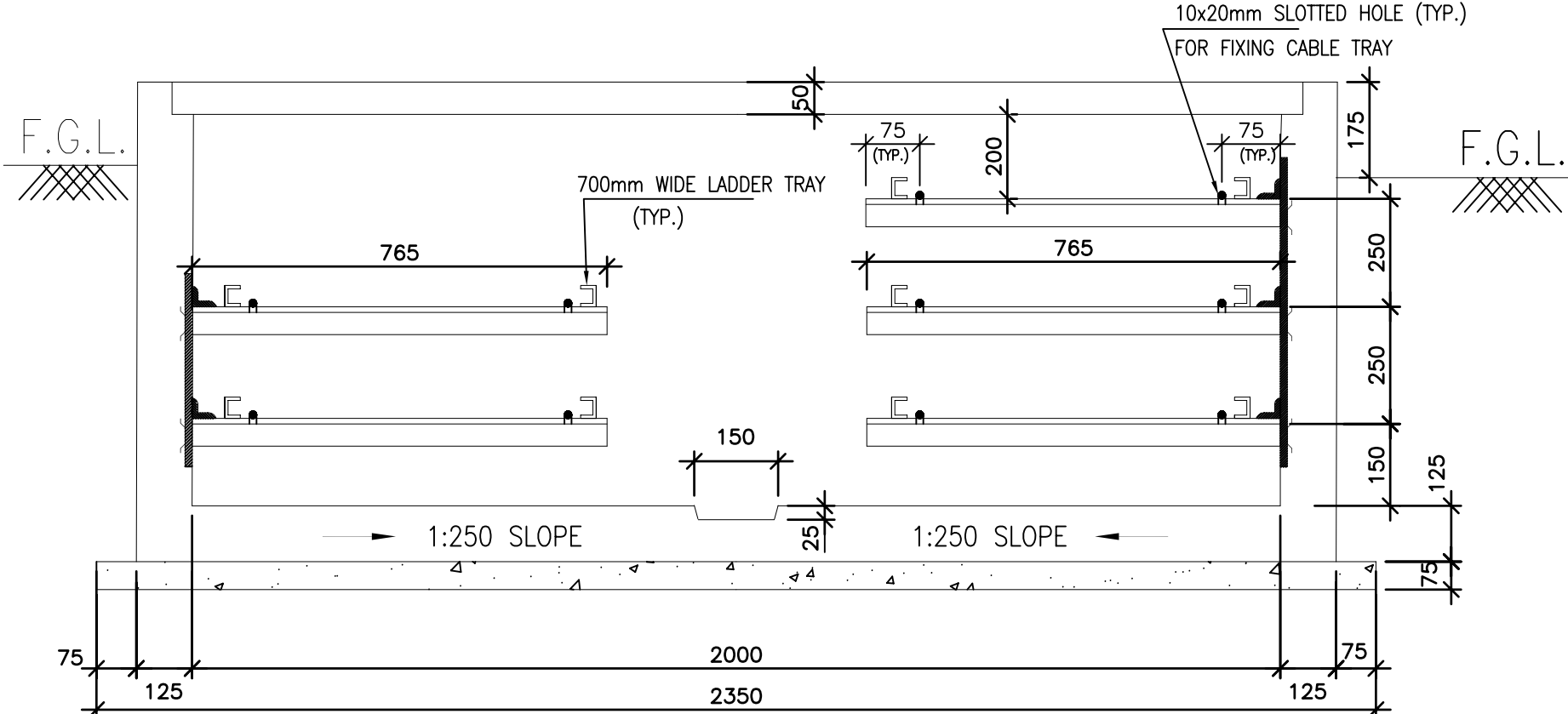
8 MM  $\phi$  X 20 MM  
LONG BOLT WITH  
1NO. NUT & 2NOs. WASHER

## NOTE:—

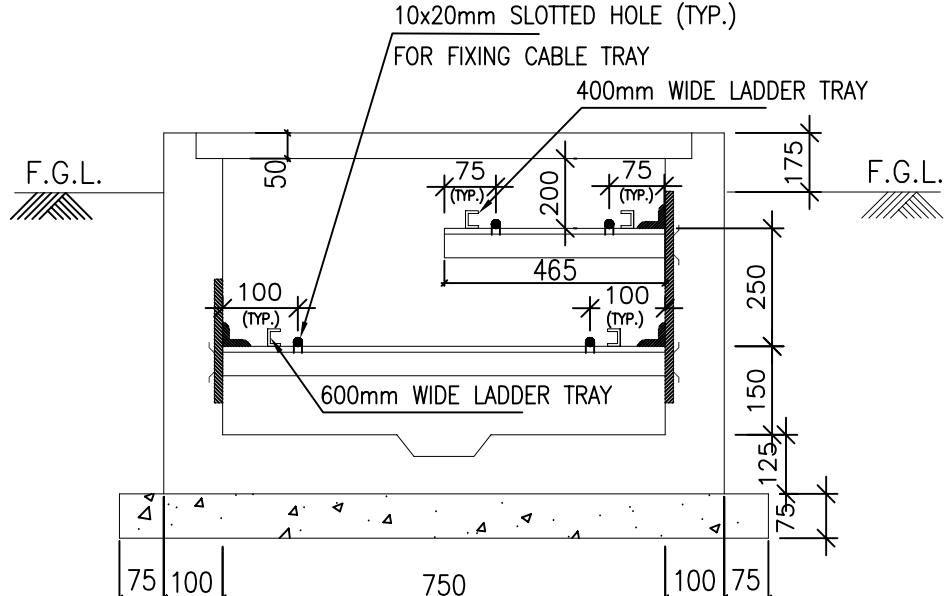
1. ALL DIMENSIONS ARE IN MM UNLESS OTHERWISE SPECIFIED.
2. LADDER TYPE CABLE TRAYS SHALL BE FABRICATED FROM ROLLED MILD STEEL, MINIMUM 2MM THICK FOR TRAYS AND 3MM THICK FOR COUPLER PLATE.
3. ALL NUTS, BOLTS AND WASHERS SHALL BE ZINC PASSIVATED.
4. CABLE TRAY ASSEMBLIES SHALL BE FABRICATED AS PER IS : 1079 GRADE "O" / IS : 2026 GRADE "A". OTHERWISE SPECIFIED.
5. CABLE TRAYS, SIDE COUPLER PLATES & CABLE RACK ASSEMBLIES SHALL BE HOT DIP GALVANISED AS PER IS : 2629
6. FABRICATION TOLERANCE  $\pm 5$ MM TO BE ALLOWED.
7. TOLERANCE ON THICKNESS  $\pm 0.2$  MM TO BE ALLOWED. OTHERWISE SPECIFIED. TOLERANCE ON DIMENSION – AS PER IS 1852.
8. 1 NO COUPLER PLATE TO BE SUPPLIED PER JOINT.

W	700	600	400	200
---	-----	-----	-----	-----

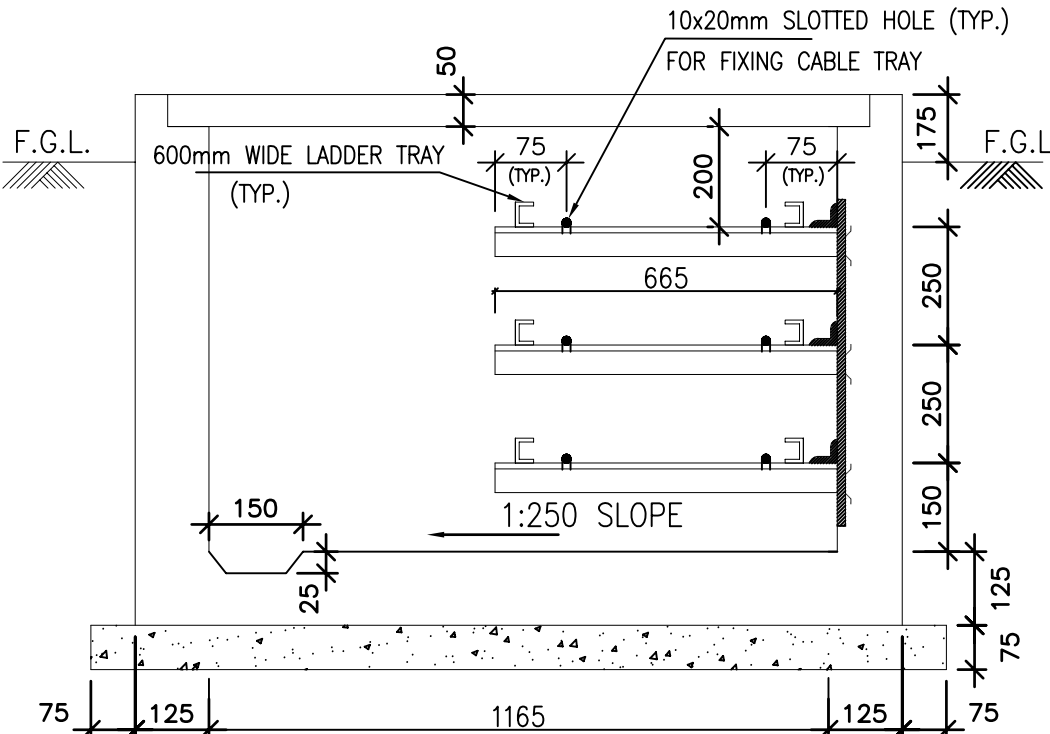
## ANNEXURE-C.3



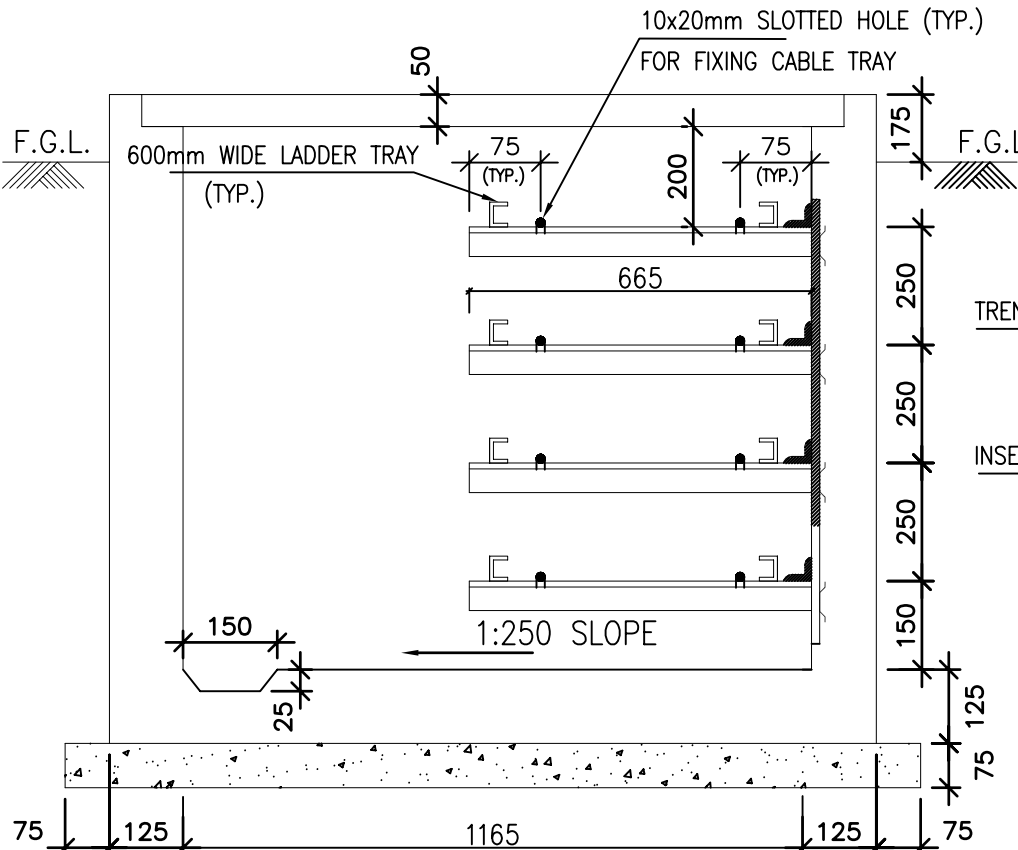
SECTION 1-1



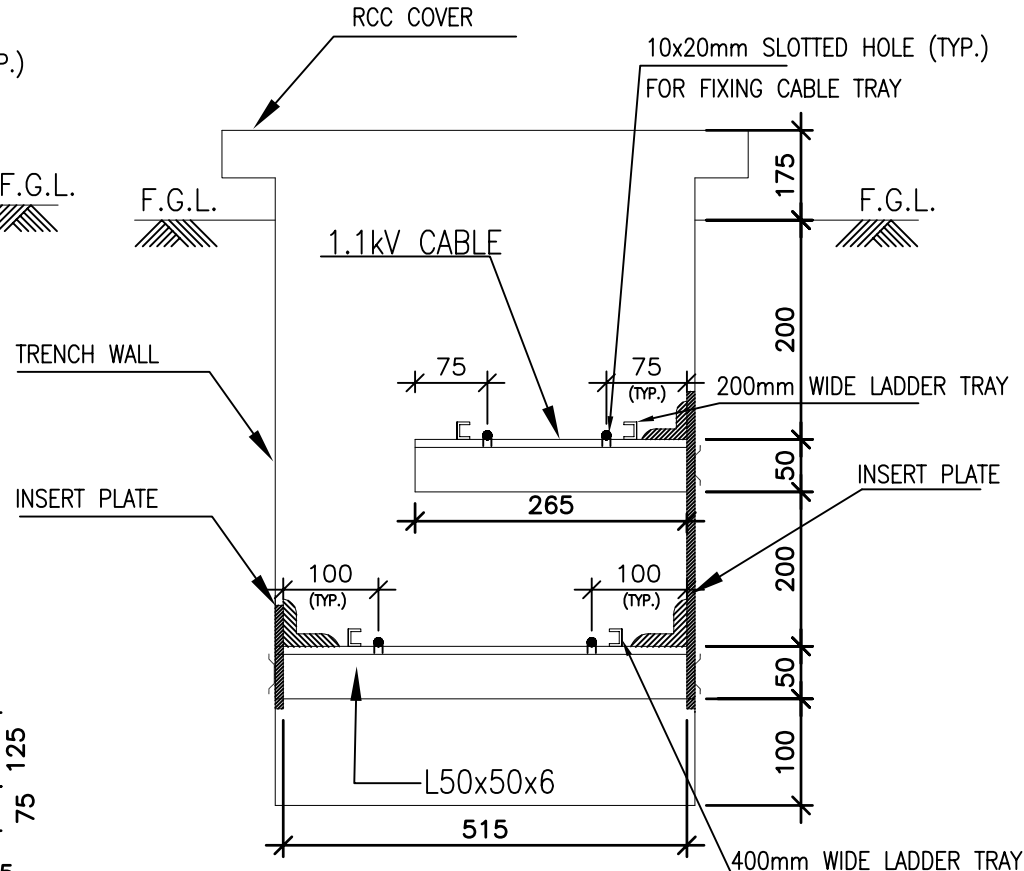
SECTION 3-3



SECTION 2-2



SECTION 2A-2A



SECTION 4-4